

Nick Pope

M.D.

Premier Tech Aqua Ltd.

2 Whitehouse Way

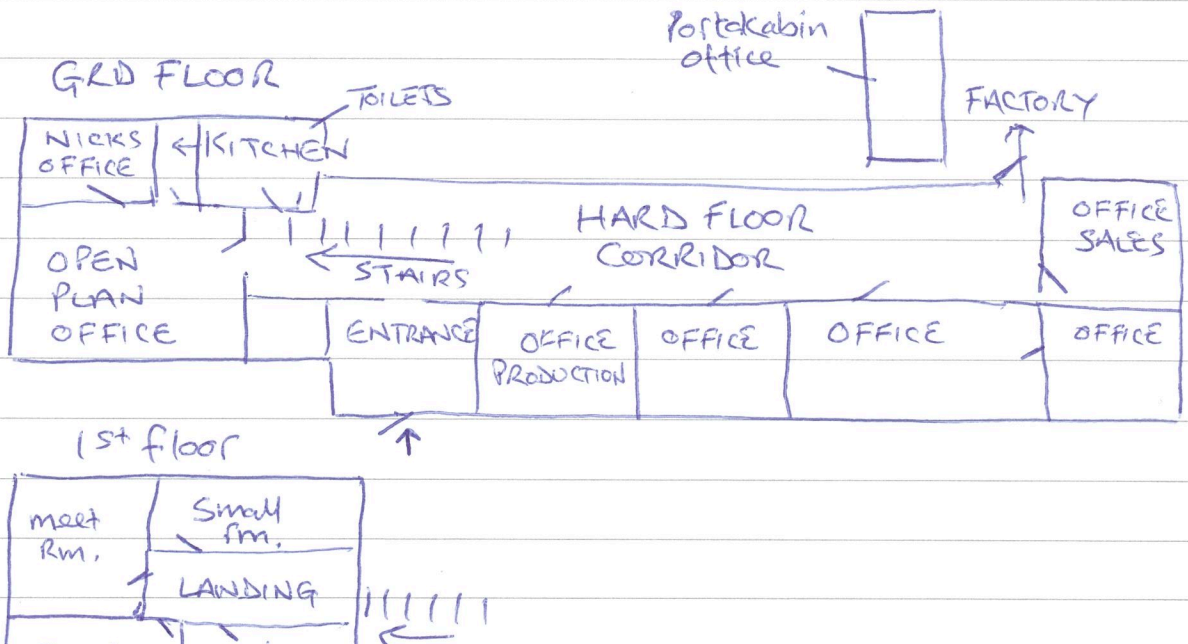
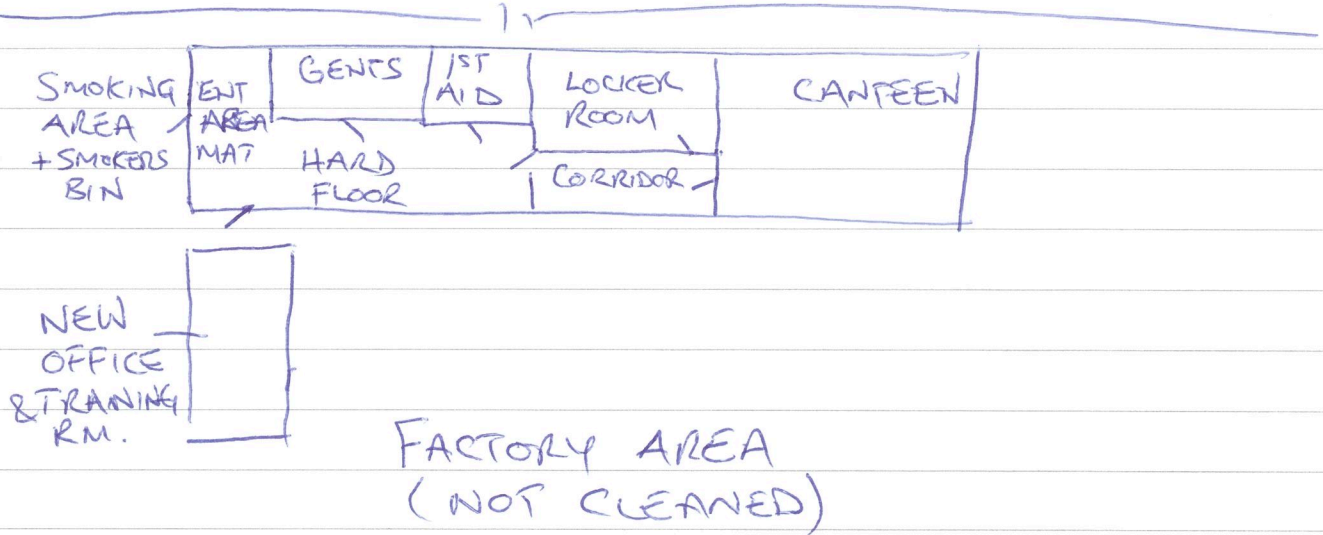
S.W. Industrial Estate

Peterlee

Co-Durham,

SR8 2RA

Factory with offices, meeting rooms, canteen, locker room.



## OFFICE AREA

Mon-

Grd ENTRANCE +  
OFFICES 836 + 350 + 216 + 120 = 1522 sq ft.

Corridor 500 sq ft tile floor

Kitchen - 90 sq ft. 2x micro 1x sink 1x Dishwasher 1x Fridge

Toilets - 4 Toilets 2 urinal 4 sinks 2 partitions  
300 sq ft.

Portakabin Office - 250 sq ft tile floor (Daily)

Usual offices - Bins, Desks, Cpts, Wind Sills, chairs etc  
Phones - weekly Detail - weekly

### 1st Floor

Carpet Stairs

Meeting Rms - 500 sq ft cpts Daily clean.

For scheduling - 2x of four rooms only need 2 pw  
cleans. (I've allowed for this in sq footage).

### New End.

Office 450 sq ft. Daily clean.  
+ Training

1st Aid - check daily, clean x 2 pw. 100 sq ft.  
Sink, bed, floor, bin.

Toilets - 260 sq ft. Tile walls. 3 T 3 U 4 sinks

New End - Cont'd,

Locker Rm 200 Hd. - Floor sweep/mop daily  
- Bin.

Canteen. - 650 Hd. - 3x micro  
1 x sink Daily  
1 x Fridge  
Tables / surfaces

Outside Smoker Area - Sweep x 1 pw } 10 mins  
Empty cig bin } =

Allow 25% sq feet - not v. busy offices

Mon - ~~Fri~~ Thu 5pm +  
Fri 1pm +